

International Working Group on Overflowing and Overtopping Erosion



Context

Embankment dams and fluvial levees

- Overflowing erosion causes near the half of failures
- Engineering tools are very limited to predict the erosion processes
- High consequences decisions are often based on crude analysis

Coastal dikes

- Very similar situation...

Concrete dams and spillways

- Prediction capabilities of engineering methods are limited
- Need to gather data and better understand the physical processes to better predict.



Main objectives of this WG

Very similar to the IWGIE ones:

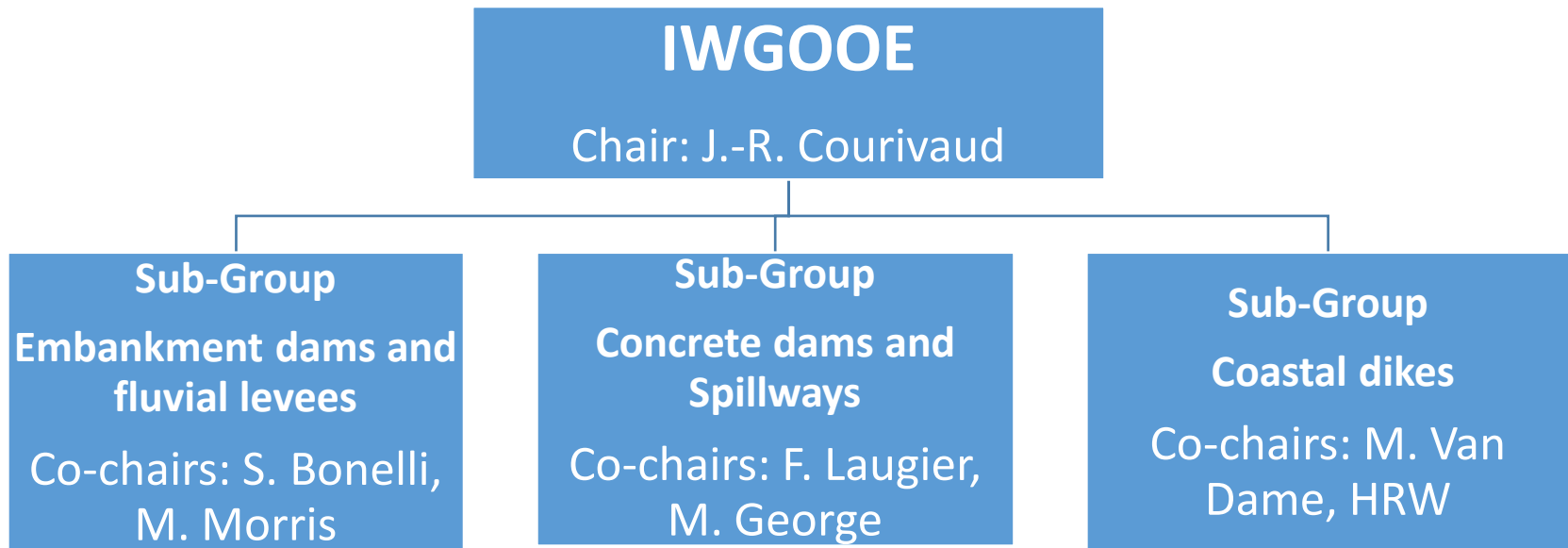
- Sharing feed-back, knowledge and information on ongoing research.
- Meeting between dam and dike owners, consulting engineers, academic researchers
- Facilitating international collaboration on research projects

Opening this WG to the entire world: not only Europeans, North Americans and Australians.



The organization of this WG

Hosted by the European Club of ICOLD





Next steps

April 2019: a document presenting a first draft of objectives and proposal of organization (meetings,...) is sent to the Aussois workshop attendees + other people potentially interested

June 2019 in Ottawa: official launch of the WG and first meeting (discussing and approving objectives and organization), book of the Aussois workshop edited and available.